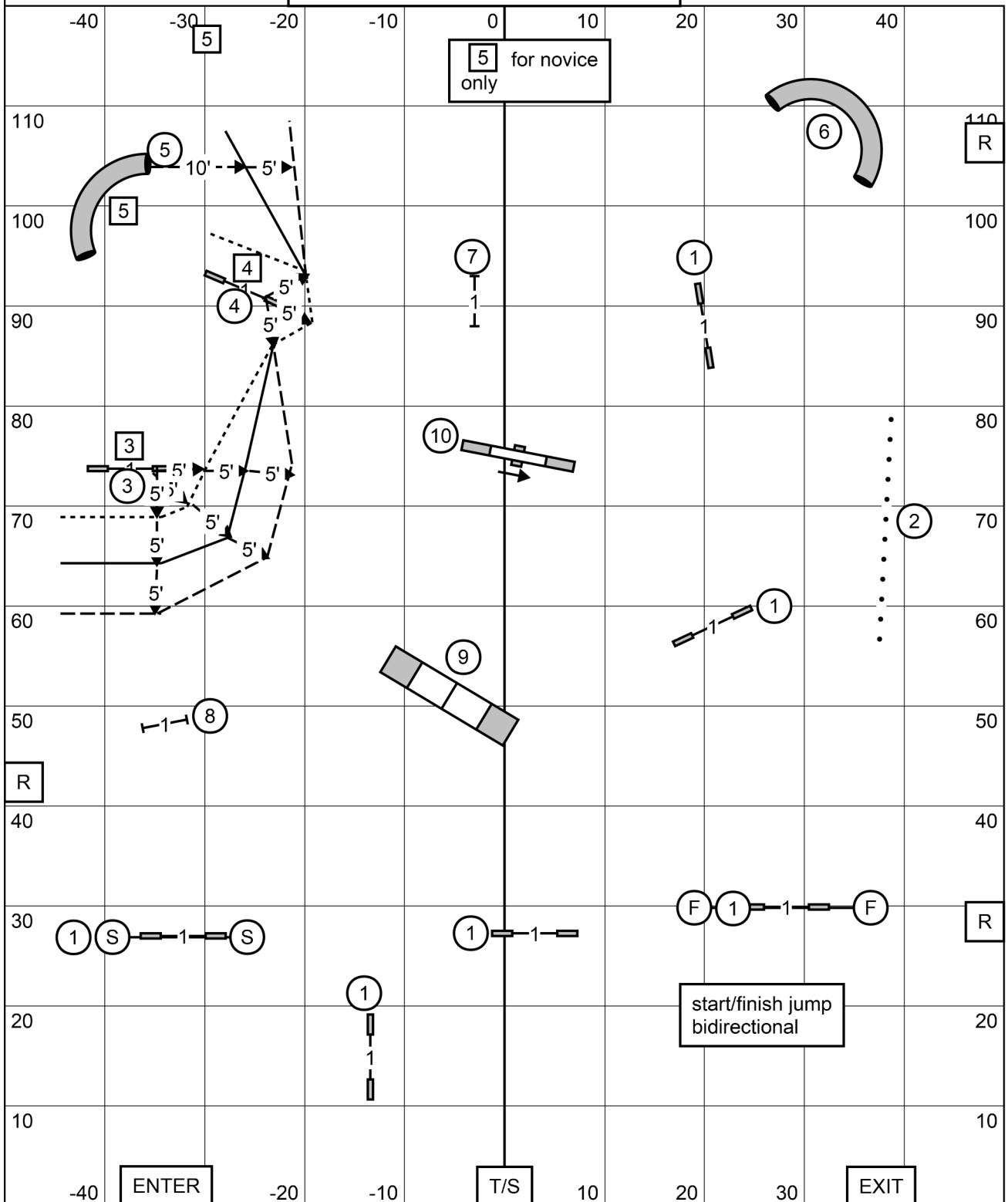
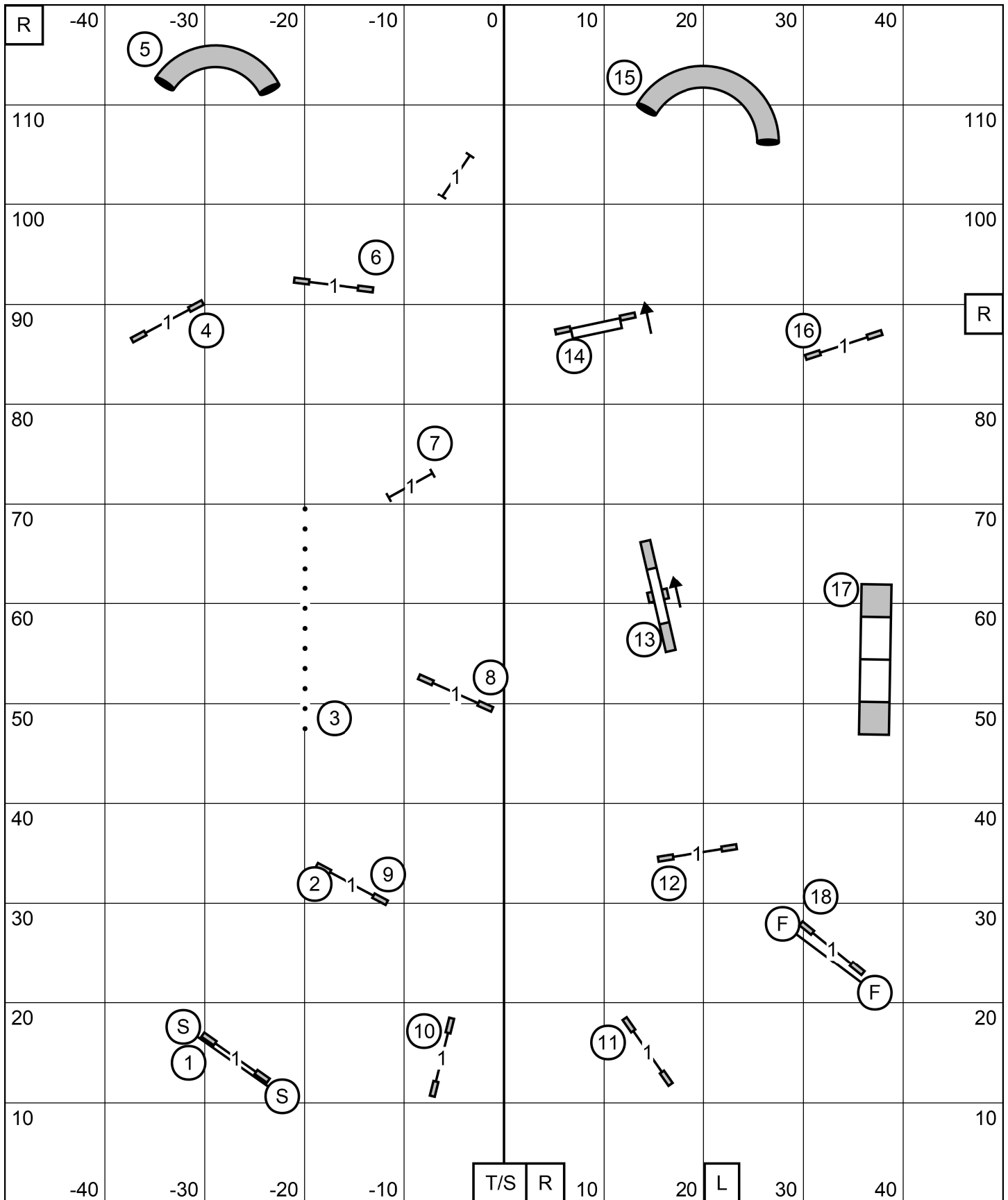


BERKS COUNTY DOG TRAINING CLUB
 IN THE NET, PALMYRA PA
 SATURDAY NOVEMBER 22, 2025
FAST(ALL LEVELS)
 JUDGE: SHERRY JEFFERSON



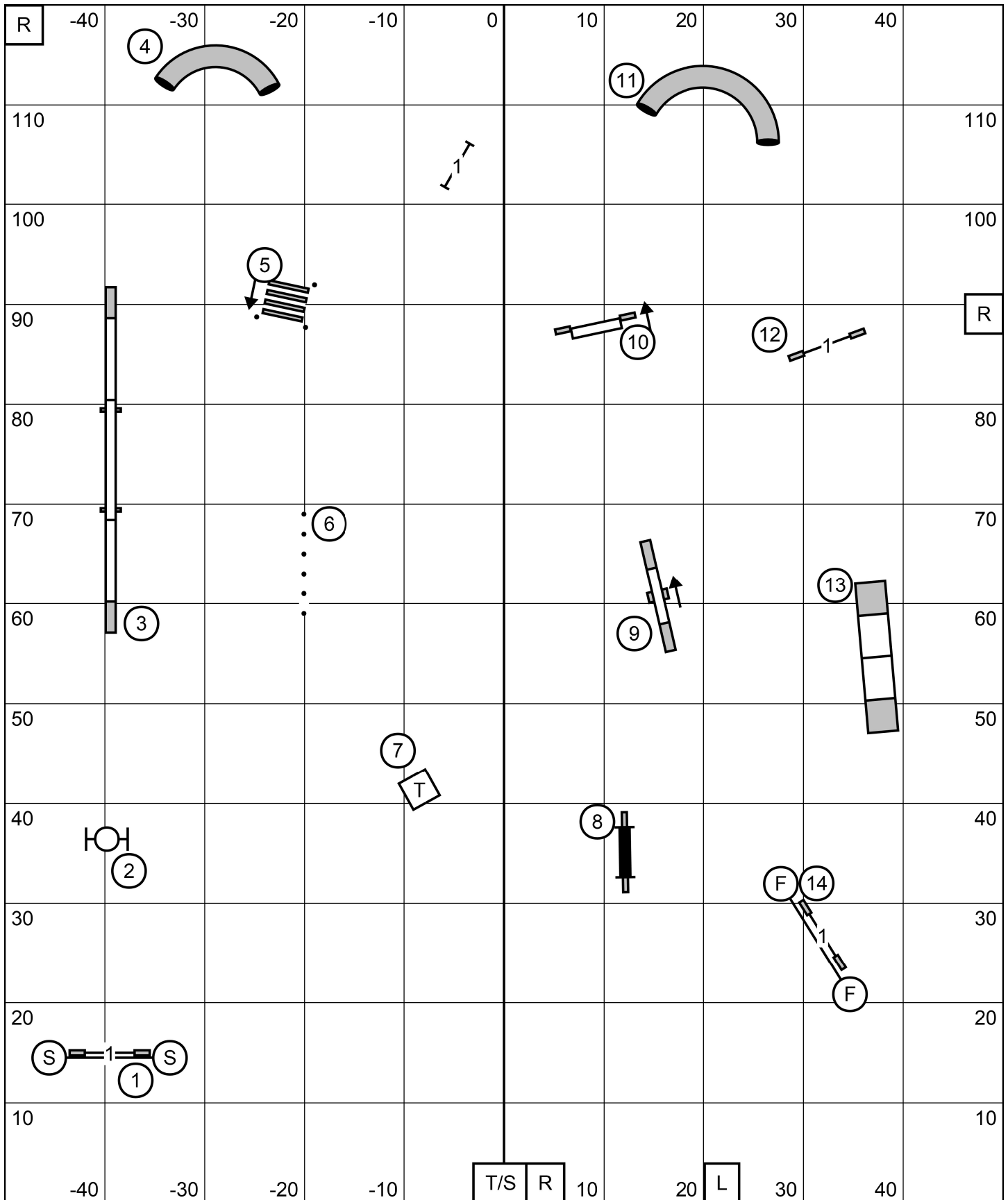
- e/m send: ----- (3) ----- (4) ----- (5) in flow 60pts(bonus+28)
- open send: ----- (3) ----- (4) ----- (5) in flow 55pts(bonus+23)
- nov. send: ----- (4) (3) in flow 50pts(bonus+23)



Gate

Time2Beat
 Berks County Dog Training Club
 In The Net Sports Complex, Palmyra, PA
 Saturday 22 November 2025
 Jo Powers

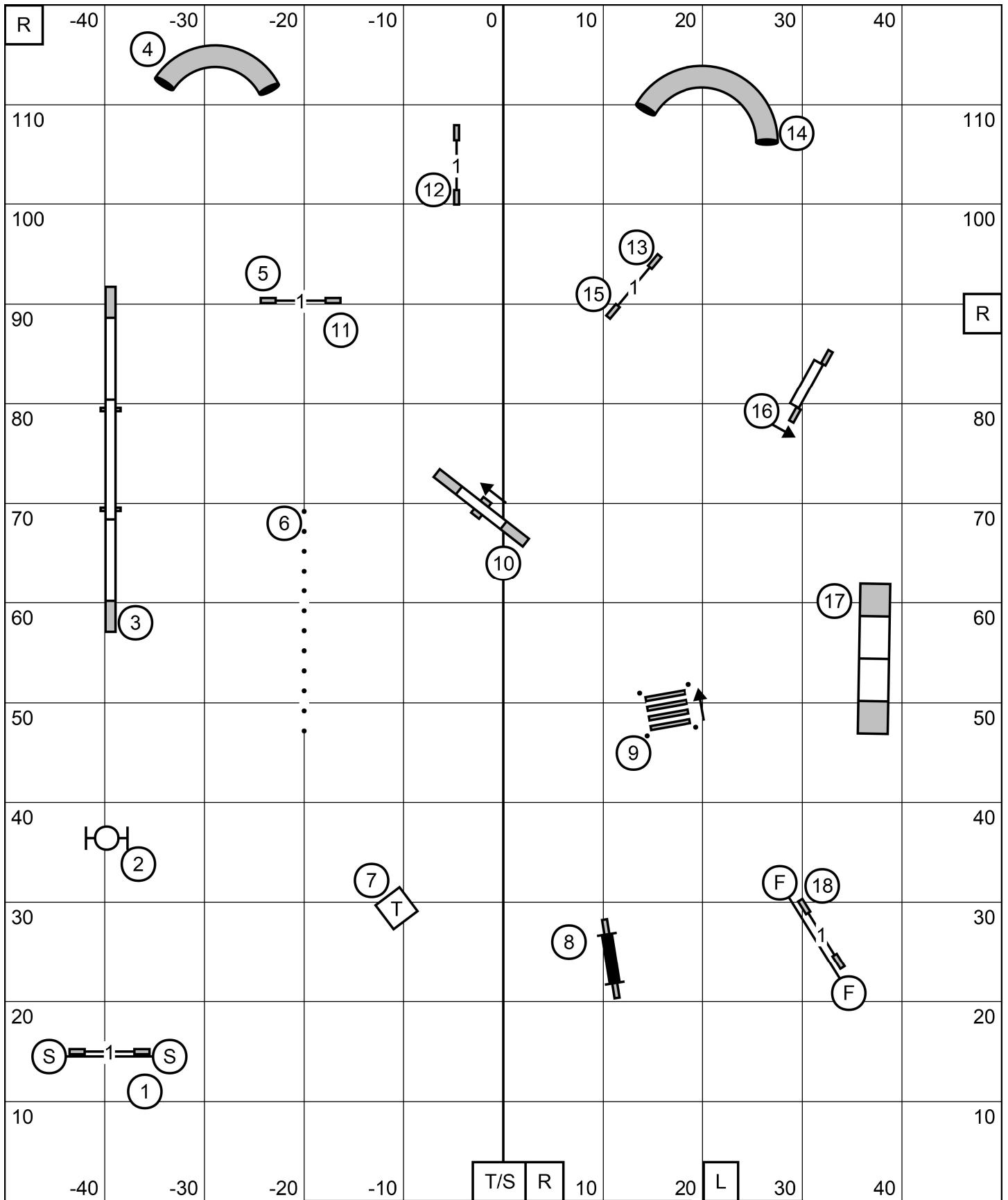
Gate



Gate

Novice Standard
 Berks County Dog Training Club
 In The Net Sports Complex, Palmyra, PA
 Saturday 22 November 2025
 Jo Powers

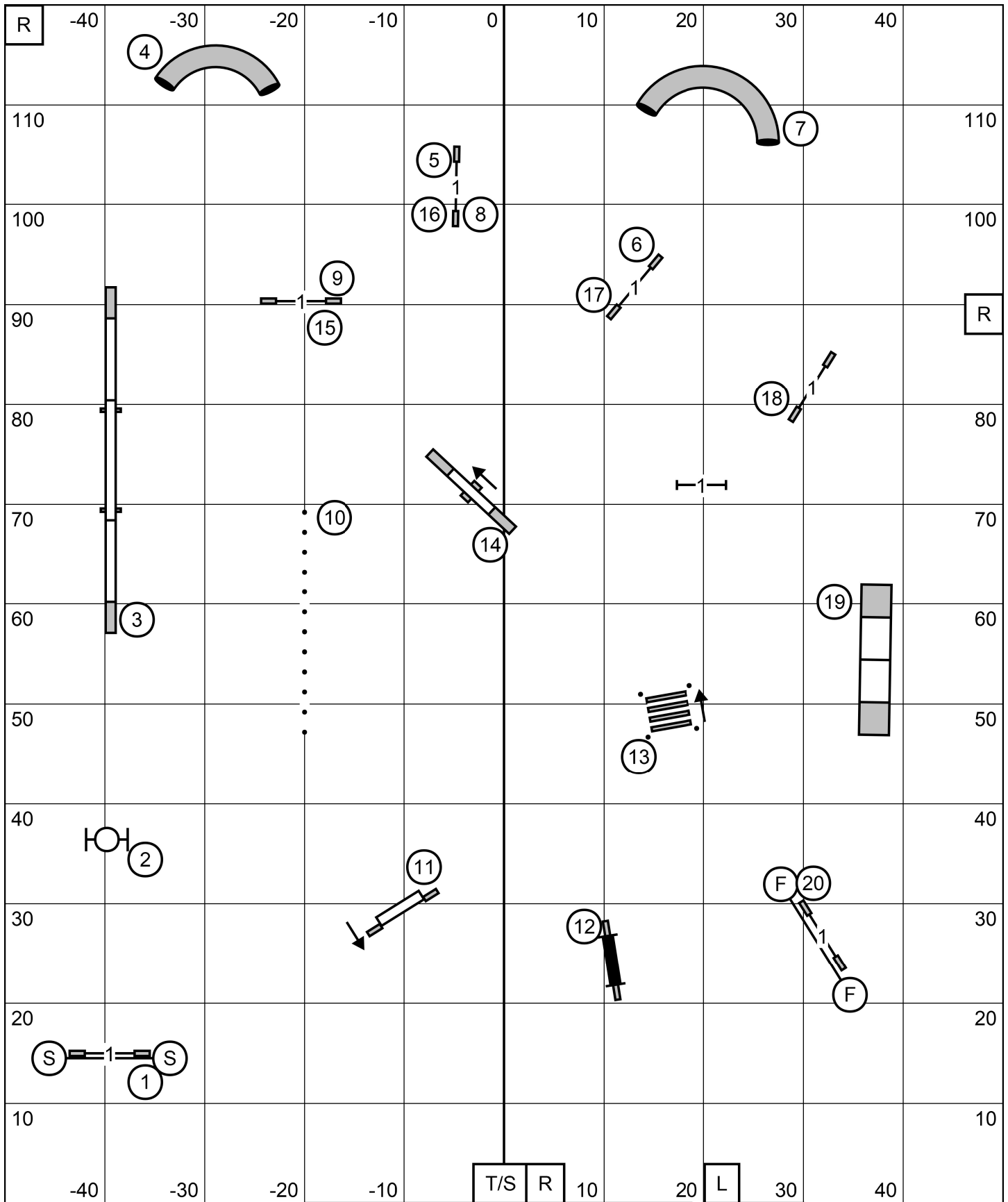
Gate



Gate

Open Standard
 Berks County Dog Training Club
 In The Net Sports Complex, Palmyra, PA
 Saturday 22 November 2025
 Jo Powers

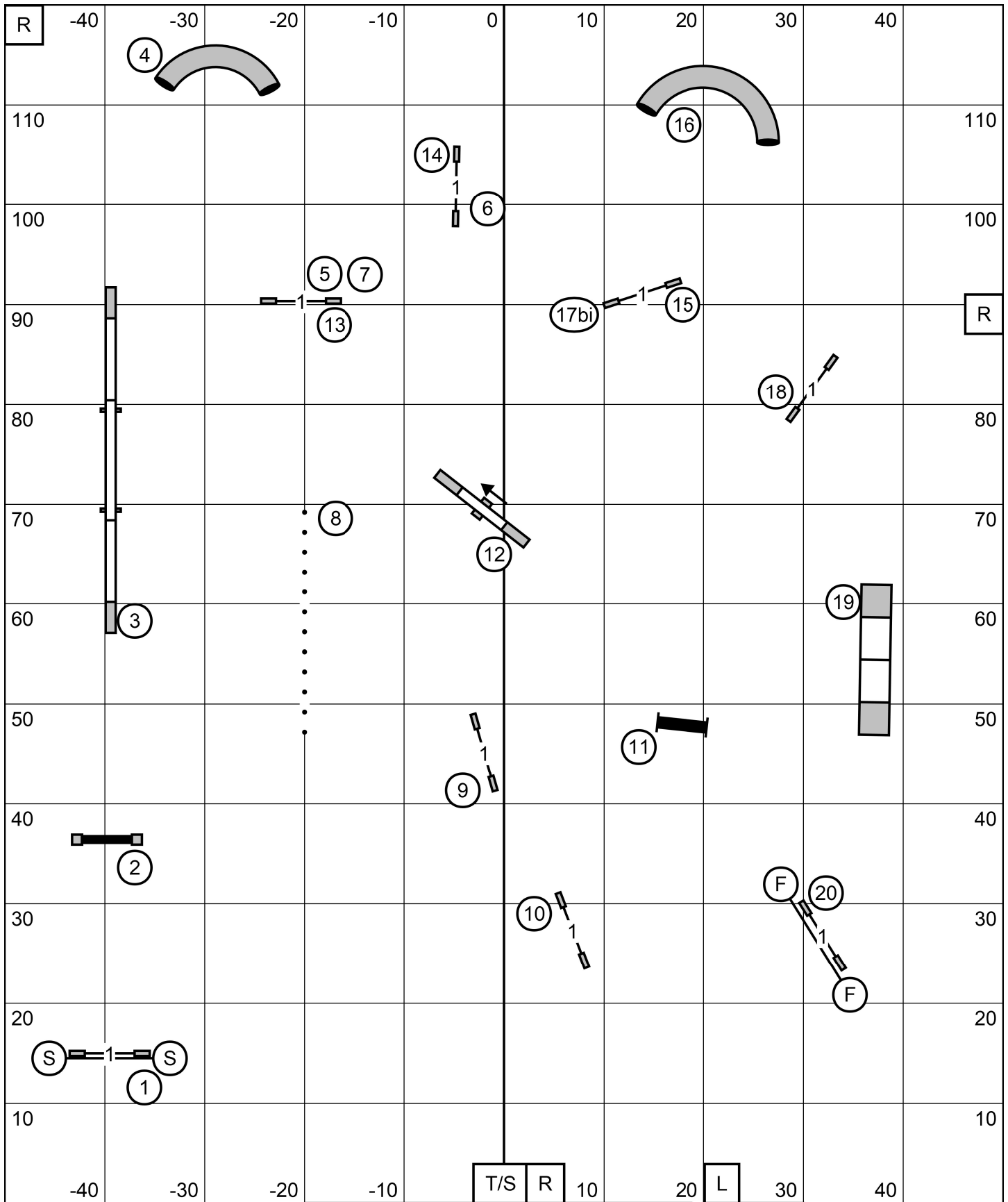
Gate



Gate

Master/Excellent Standard
 Berks County Dog Training Club
 In The Net Sports Complex, Palmyra, PA
 Saturday 22 November 2025
 Jo Powers

Gate

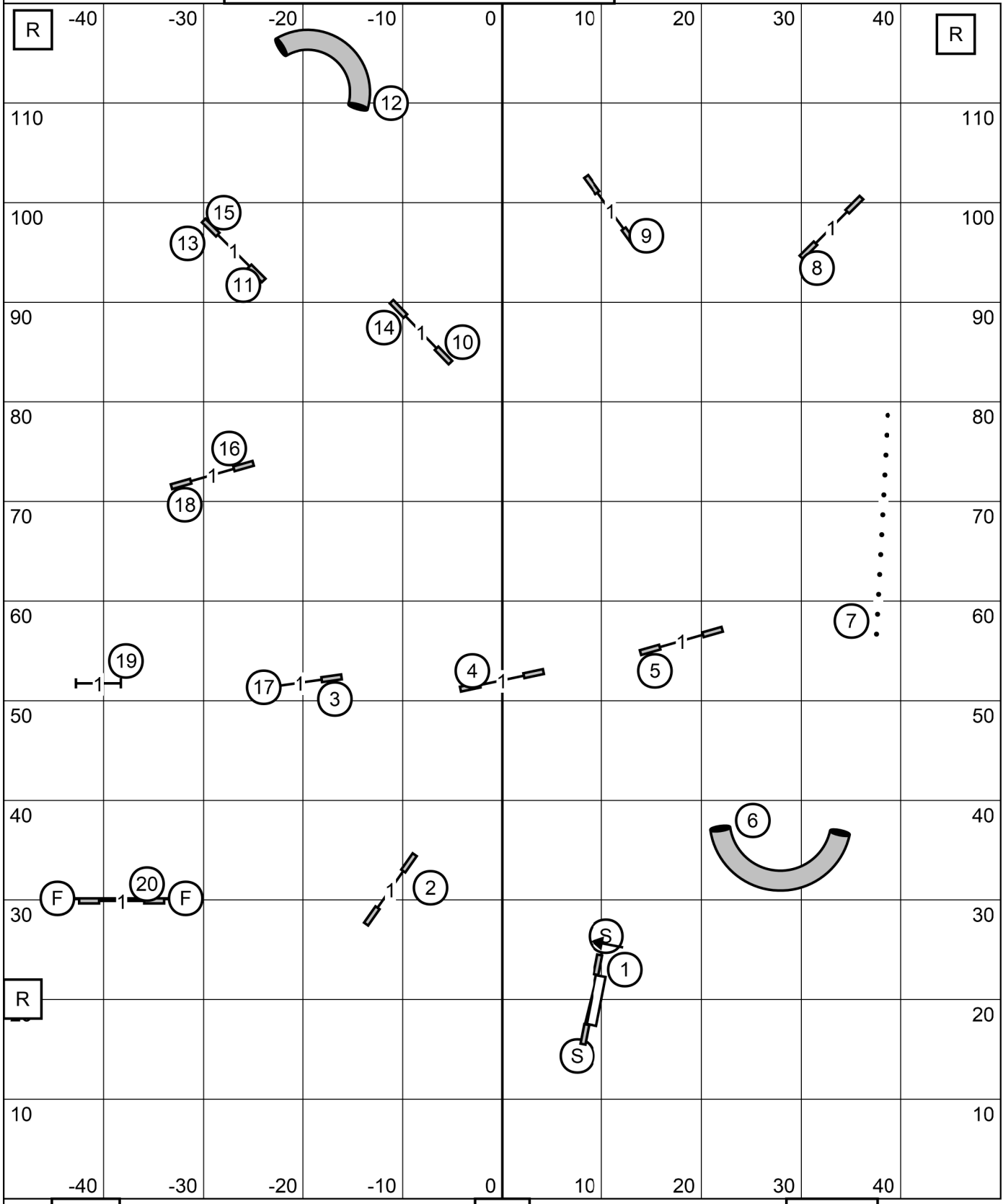


Gate

Premier Standard
 Berks County Dog Training Club
 In The Net Sports Complex, Palmyra, PA
 Saturday 22 November 2025
 Jo Powers

Gate

BERKS COUNTY DOG TRAINING CLUB
 IN THE NET, PALMYRA PA
 SATURDAY NOVEMBER 22, 2025
PREMIER JWW
 JUDGE: SHERRY JEFFERSON

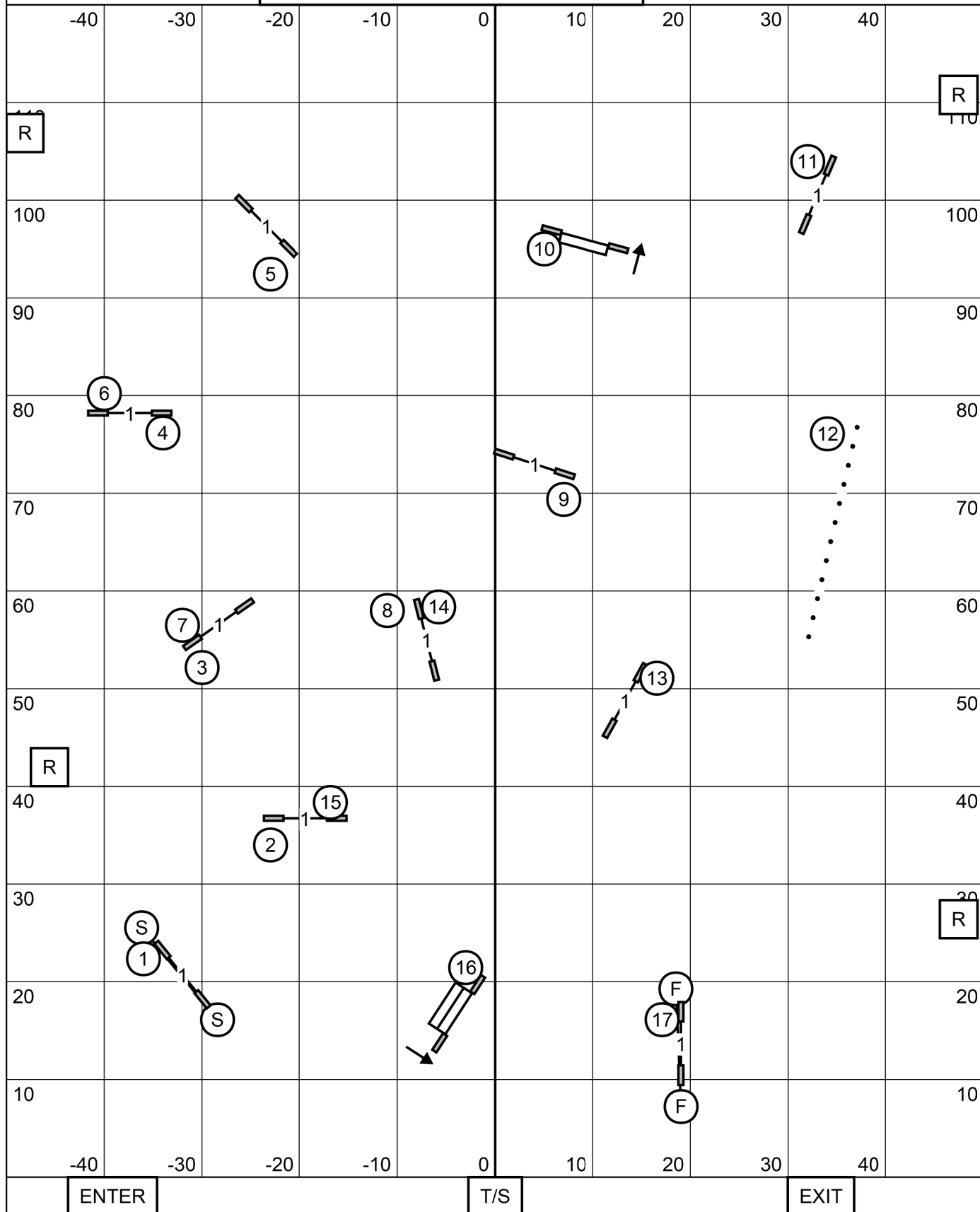


EXIT

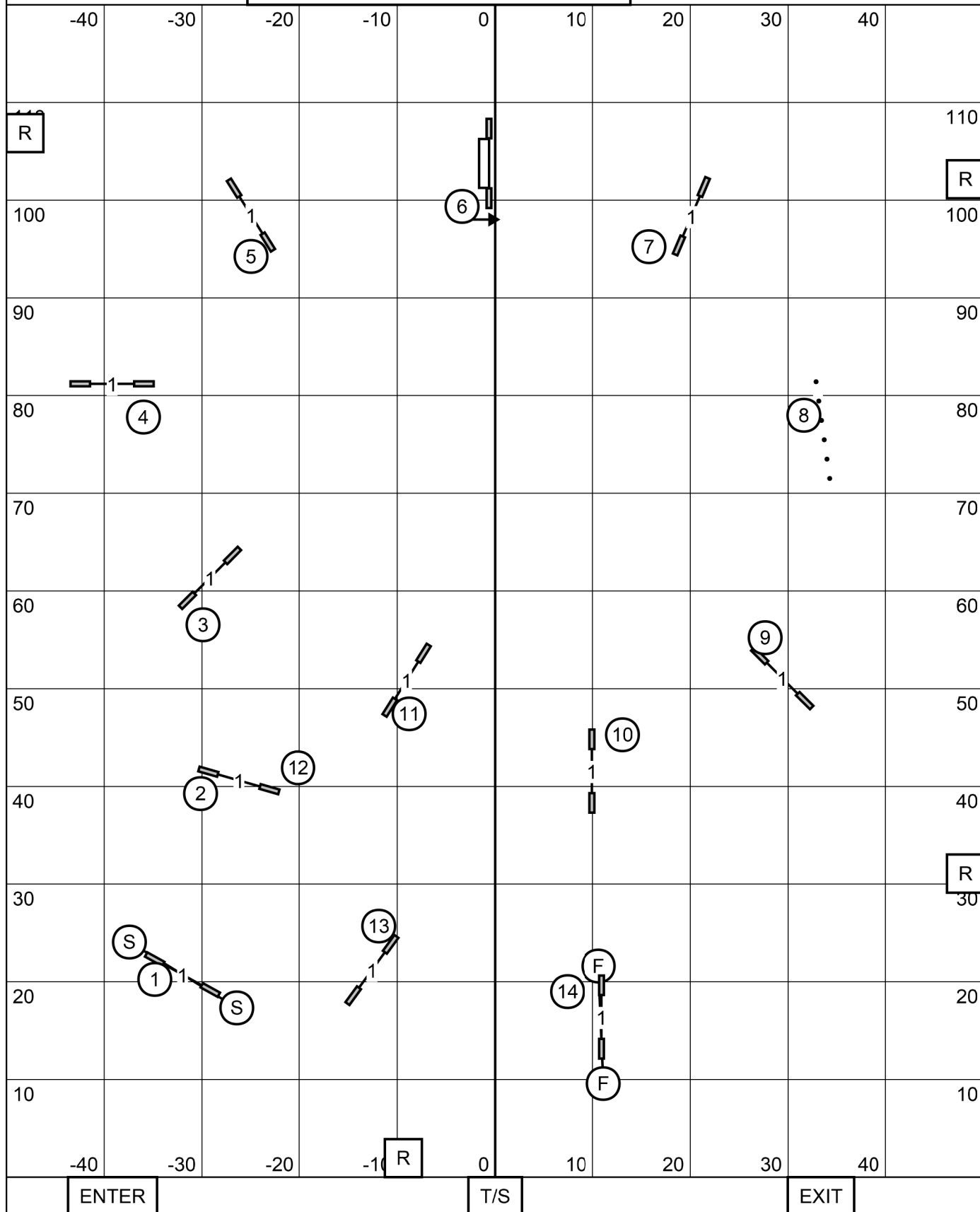
T/S

ENTER

BERKS COUNTY DOG TRAINING CLUB
 IN THE NET, PALMYRA PA
 SATURDAY NOVEMBER 22, 2025
OPEN JWW
 JUDGE: SHERRY JEFFERSON



BERKS COUNTY DOG TRAINING CLUB
 IN THE NET, PALMYRA PA
 SATURDAY NOVEMBER 22, 2025
NOVICE JWW
 JUDGE: SHERRY JEFFERSON



BERKS COUNTY DOG TRAINING CLUB
 IN THE NET, PALMYRA PA
 SATURDAY NOVEMBER 22, 2025
PREMIER JWW
 JUDGE: SHERRY JEFFERSON

