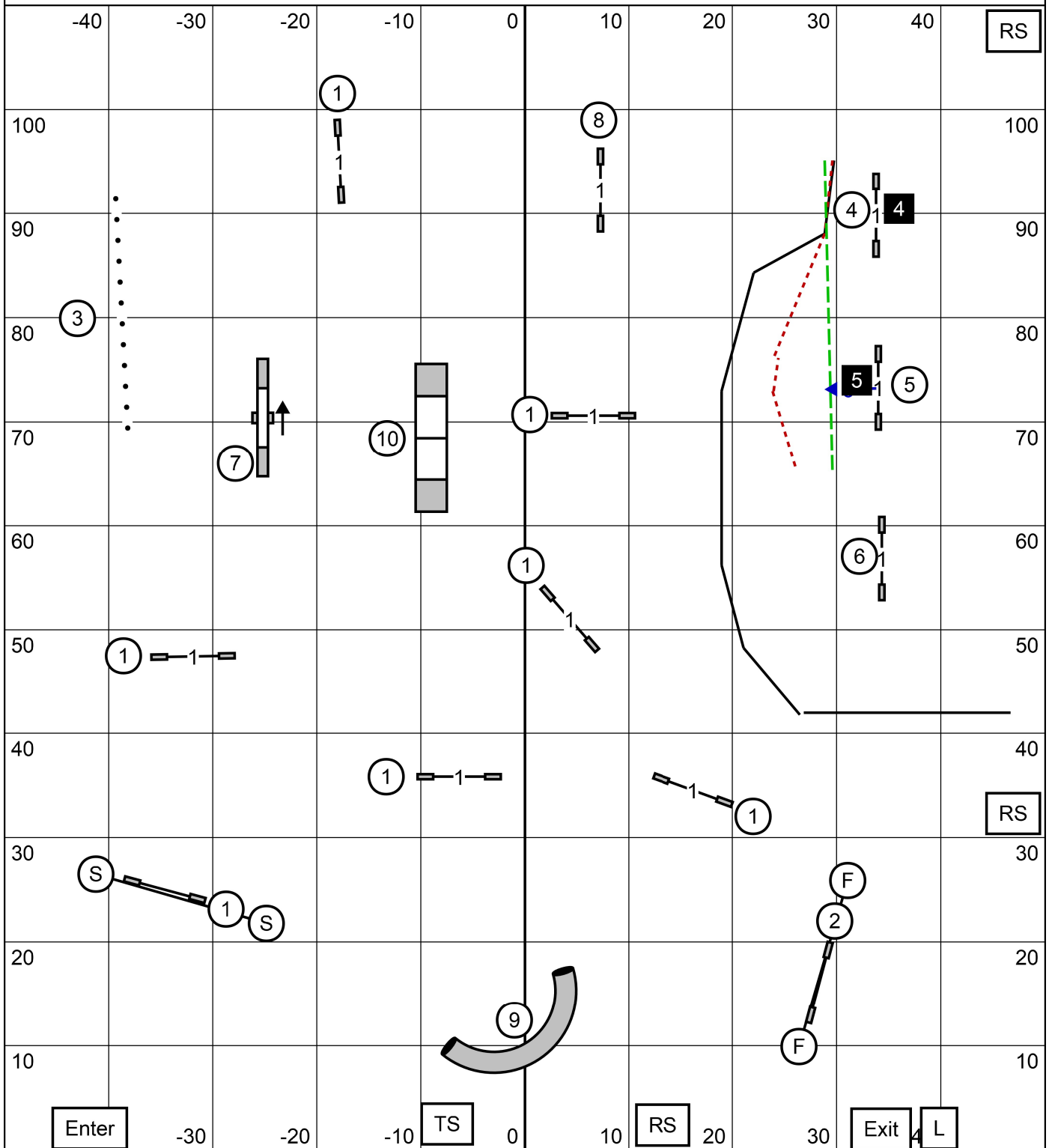
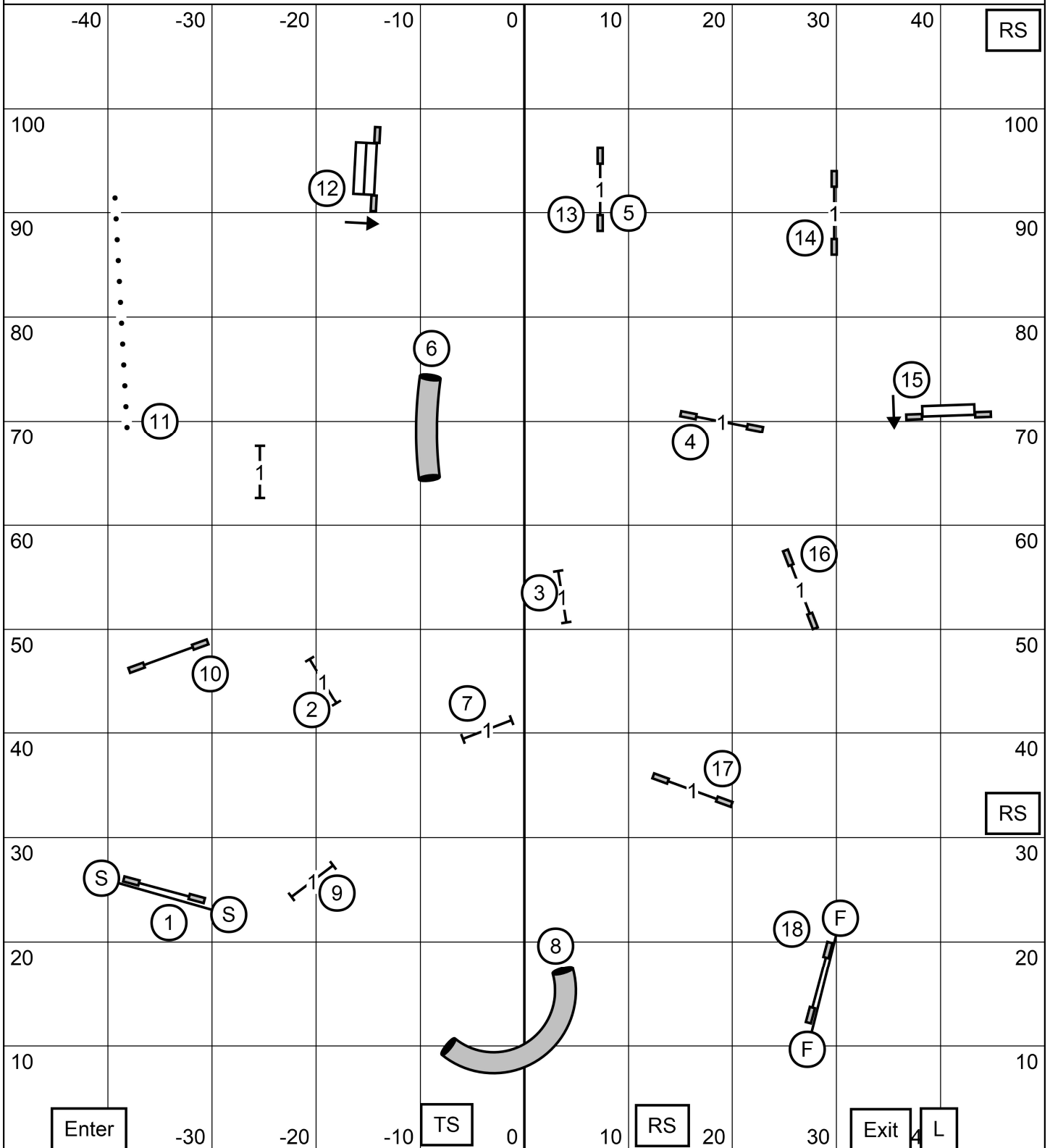


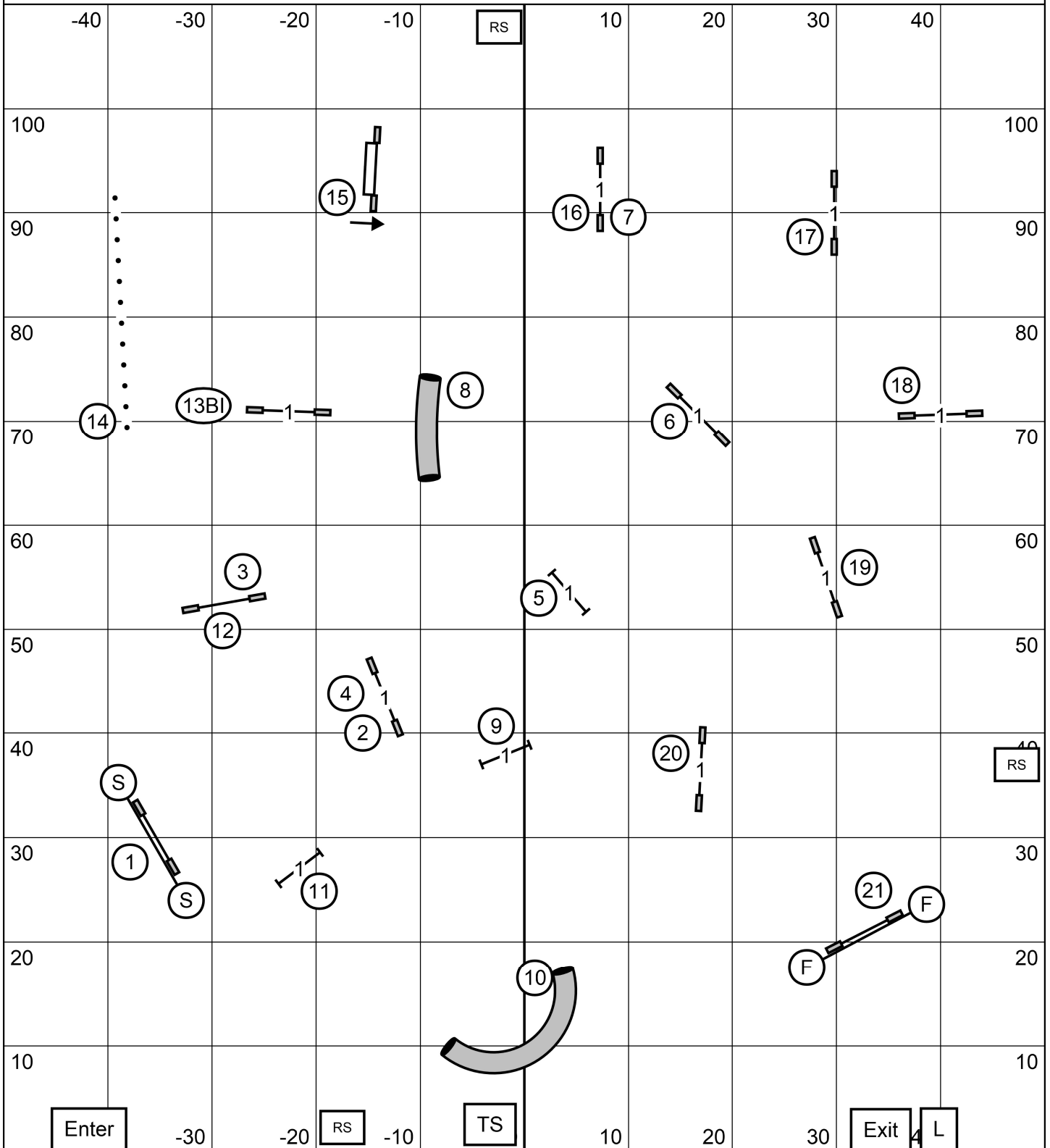
**ALL FAST**

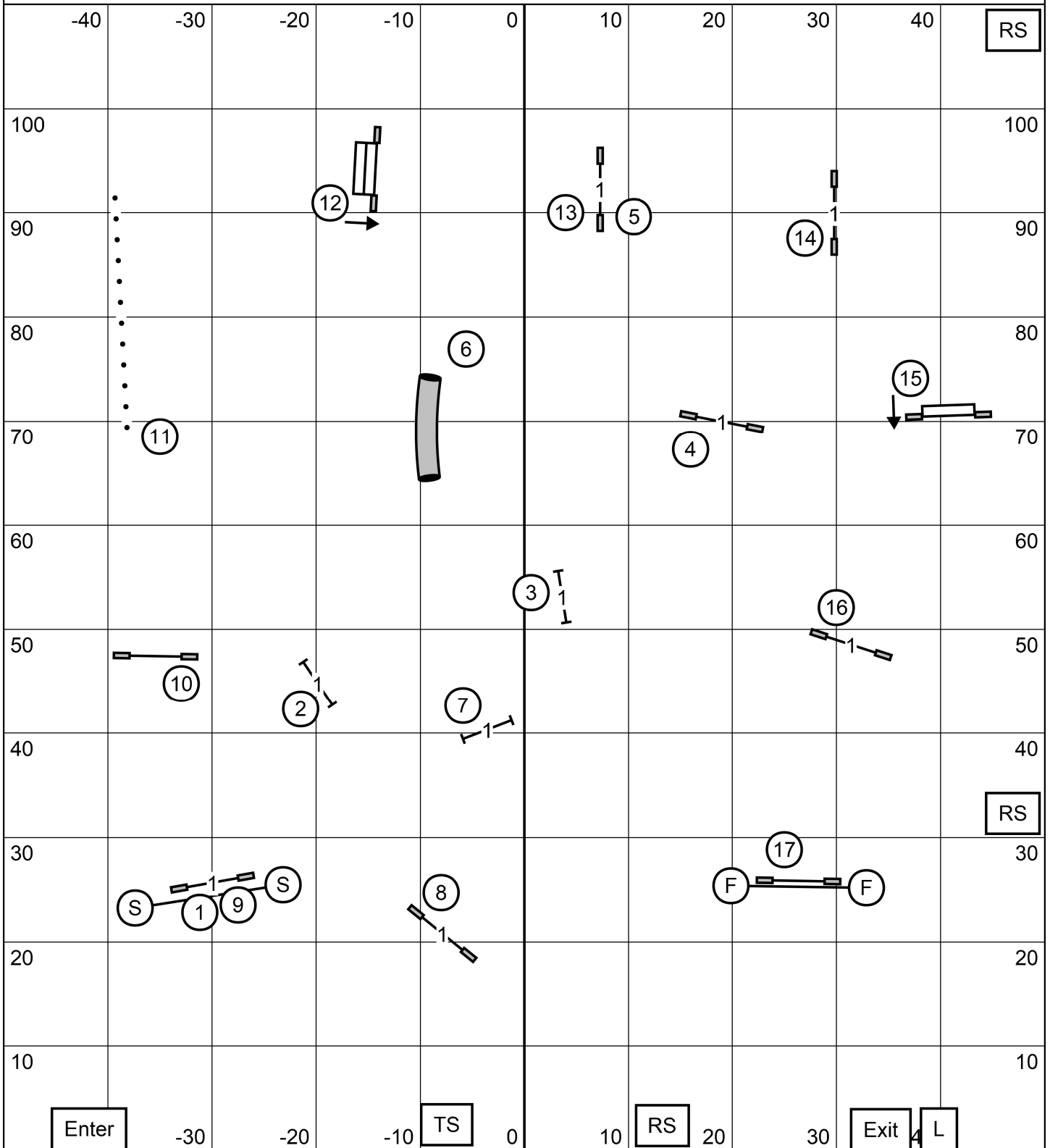


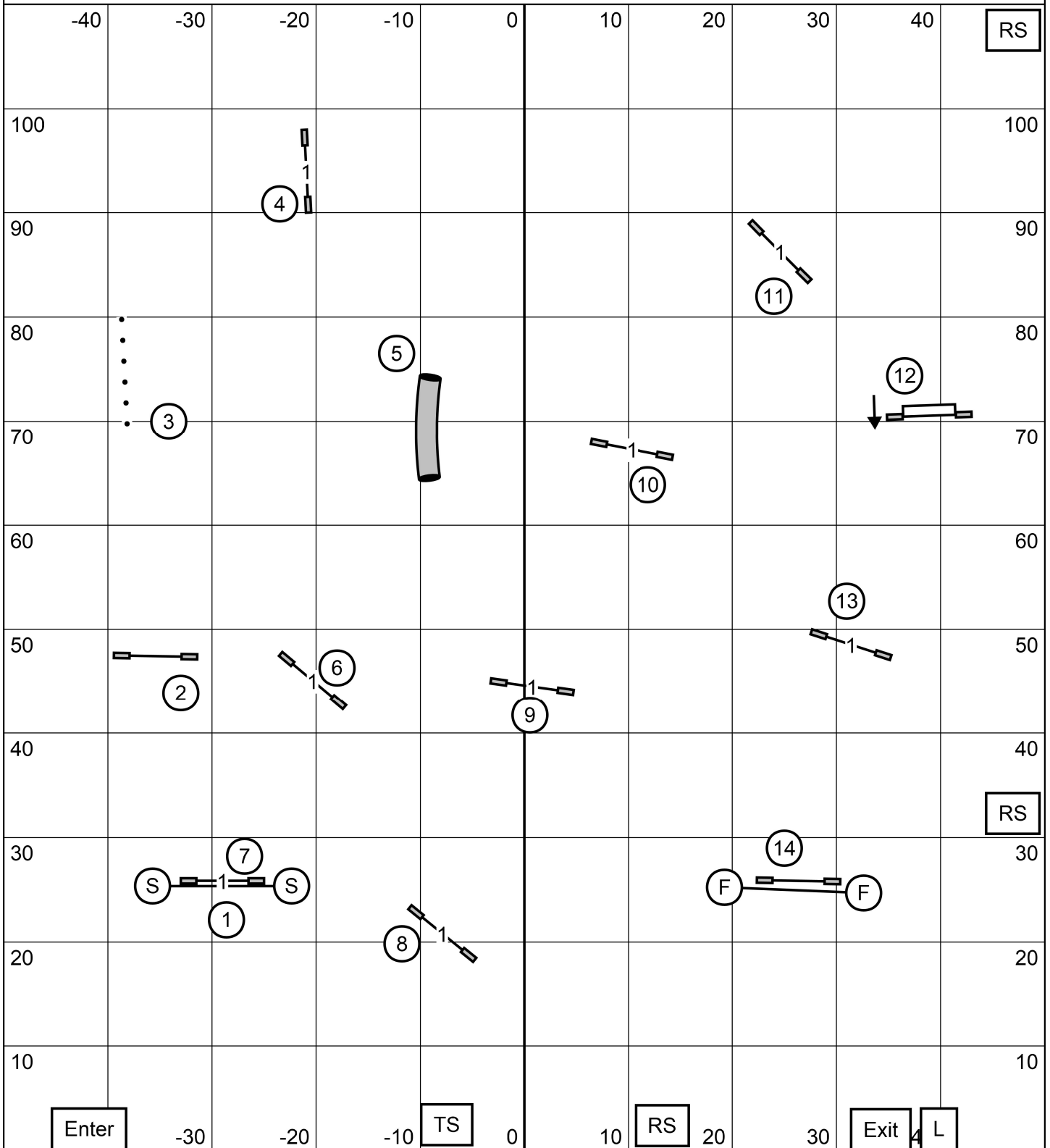
- E/M: (4) (5) (6) OR (6) (5) (4) ———
- Open: (4) (5) OR (5) (4) - - - - -
- Novice: (4) (5) OR (5) (4) - - - - -

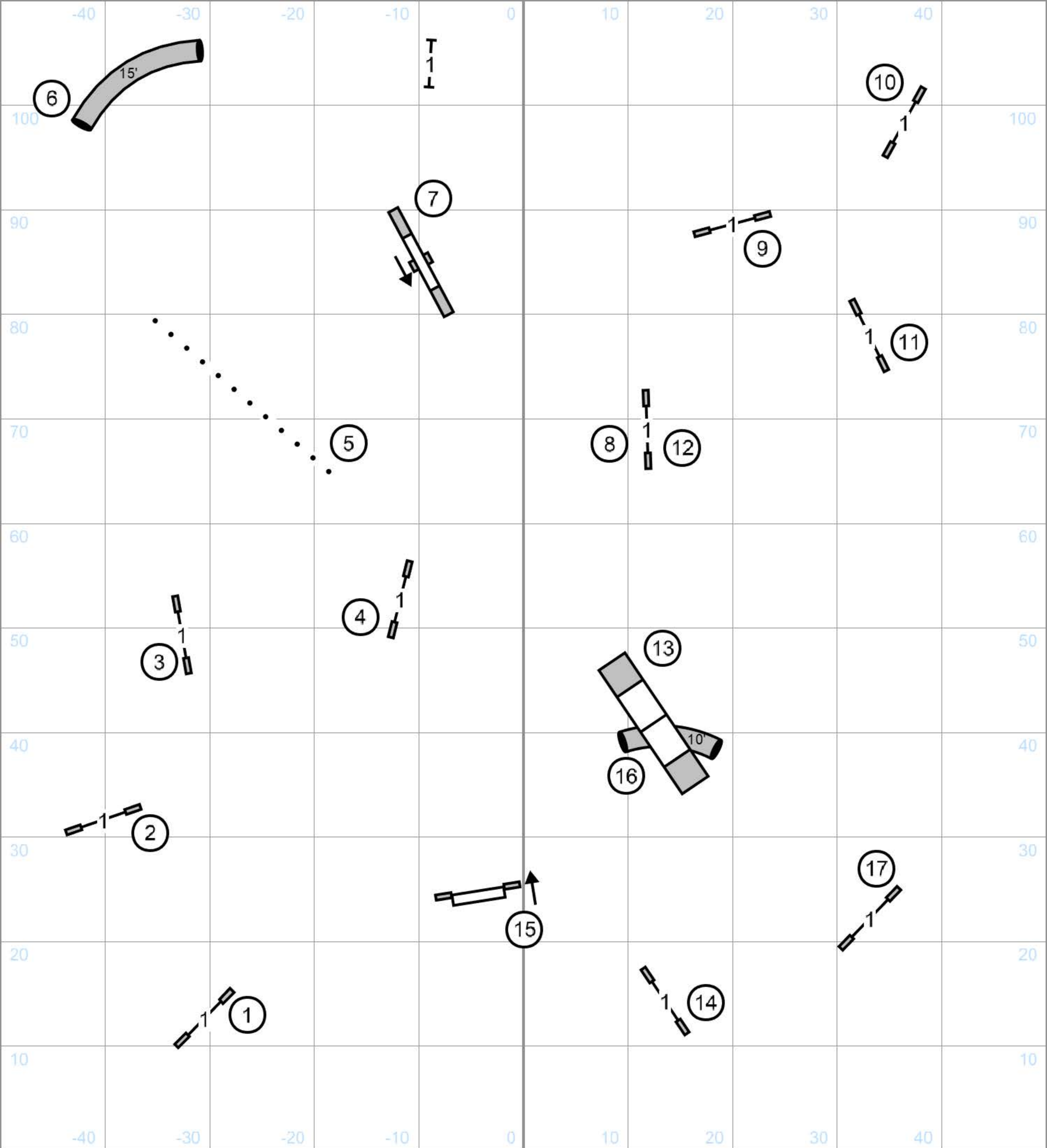
START & FINISH JUMPS ARE BI-DIRECTIONAL  
 ALL OBSTACLES IN THE BODY OF THE COURSE ARE BI-DIRECTIONAL EXCEPT THE TEETER.









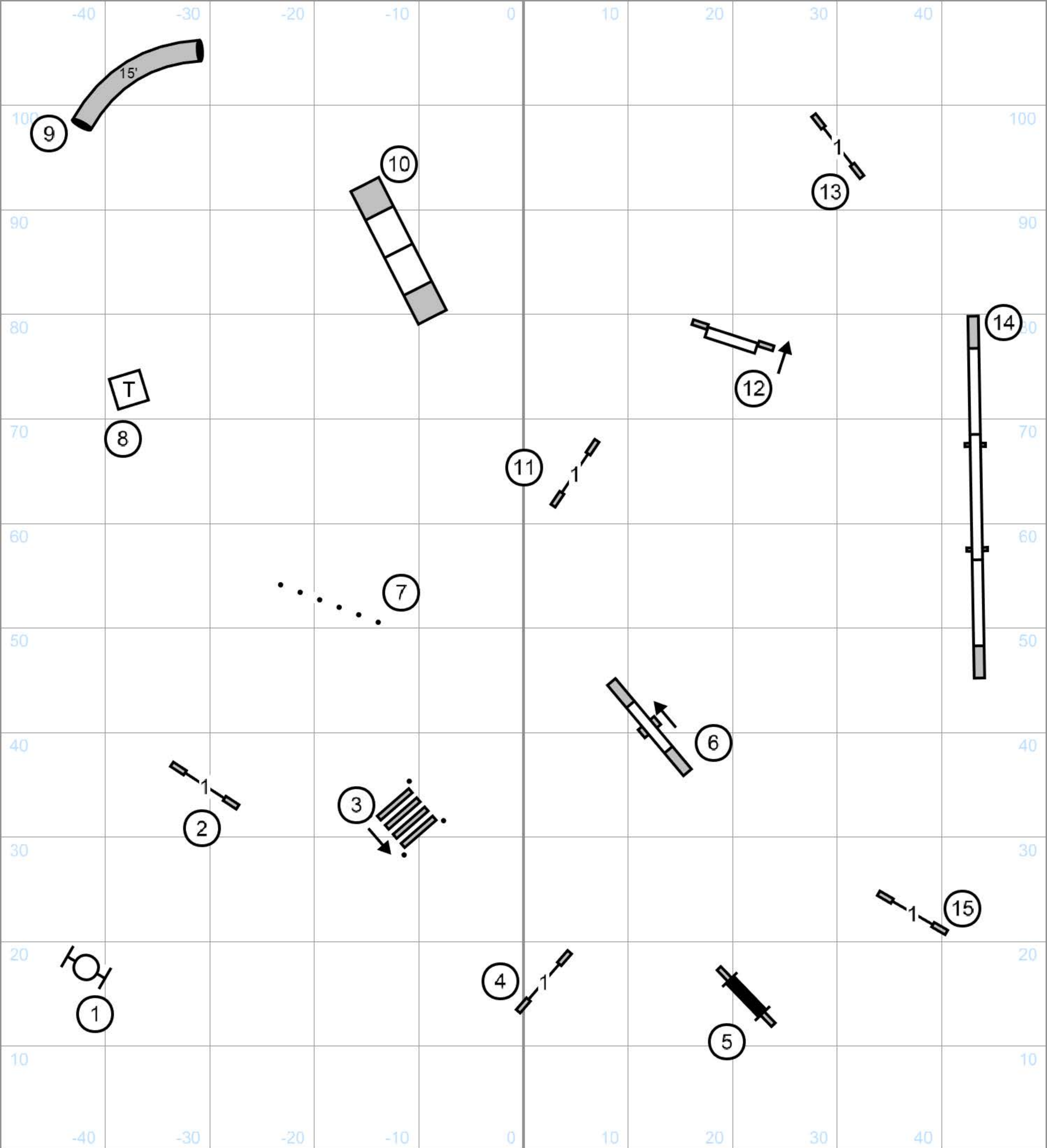


Agility Association of Central New Jersey

**T2B**

Saturday June 14, 2025

Judge: Han Yu

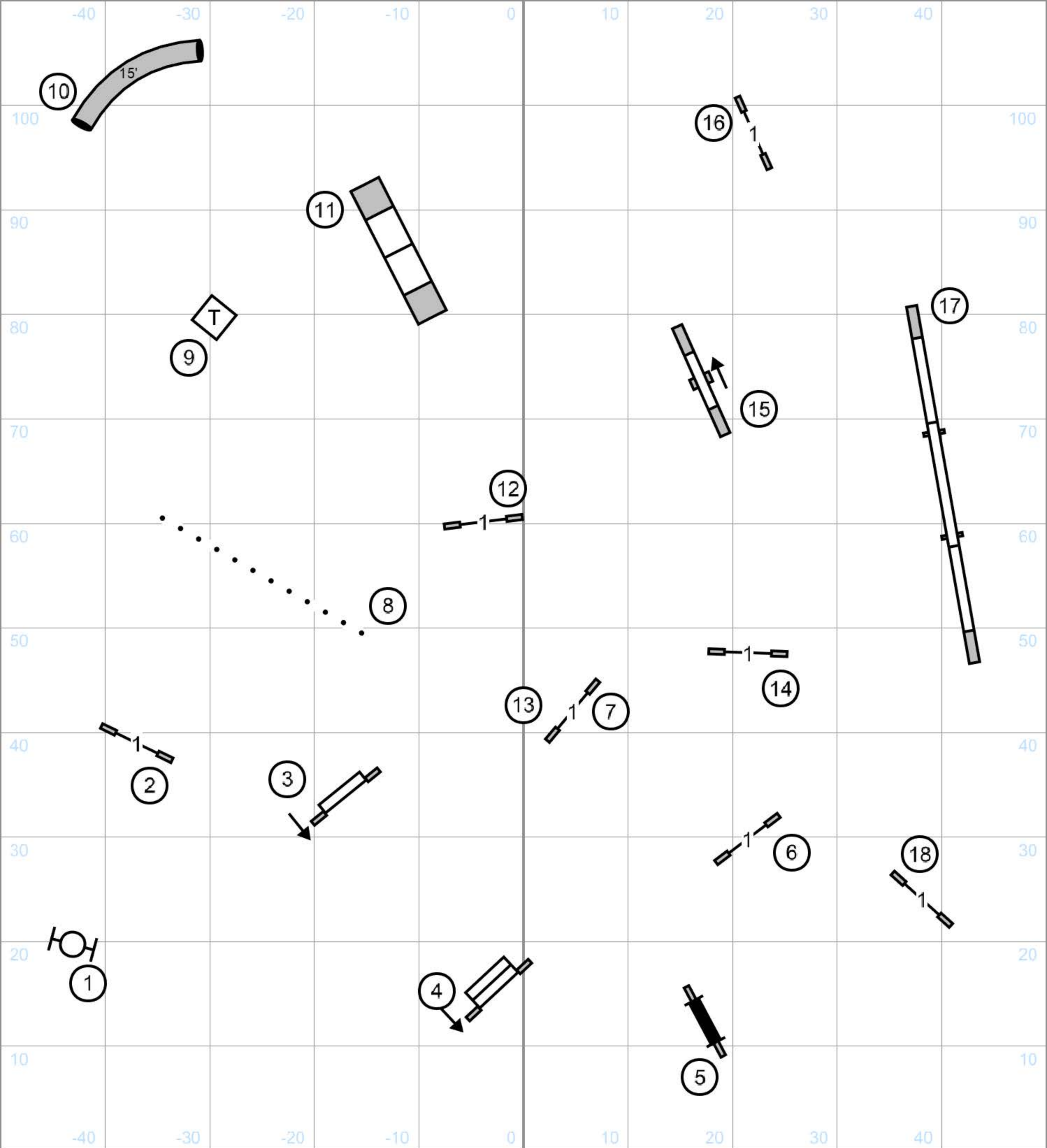


Agility Association of Central New Jersey

**Novice Standard**

Saturday June 14, 2025

Judge: Han Yu

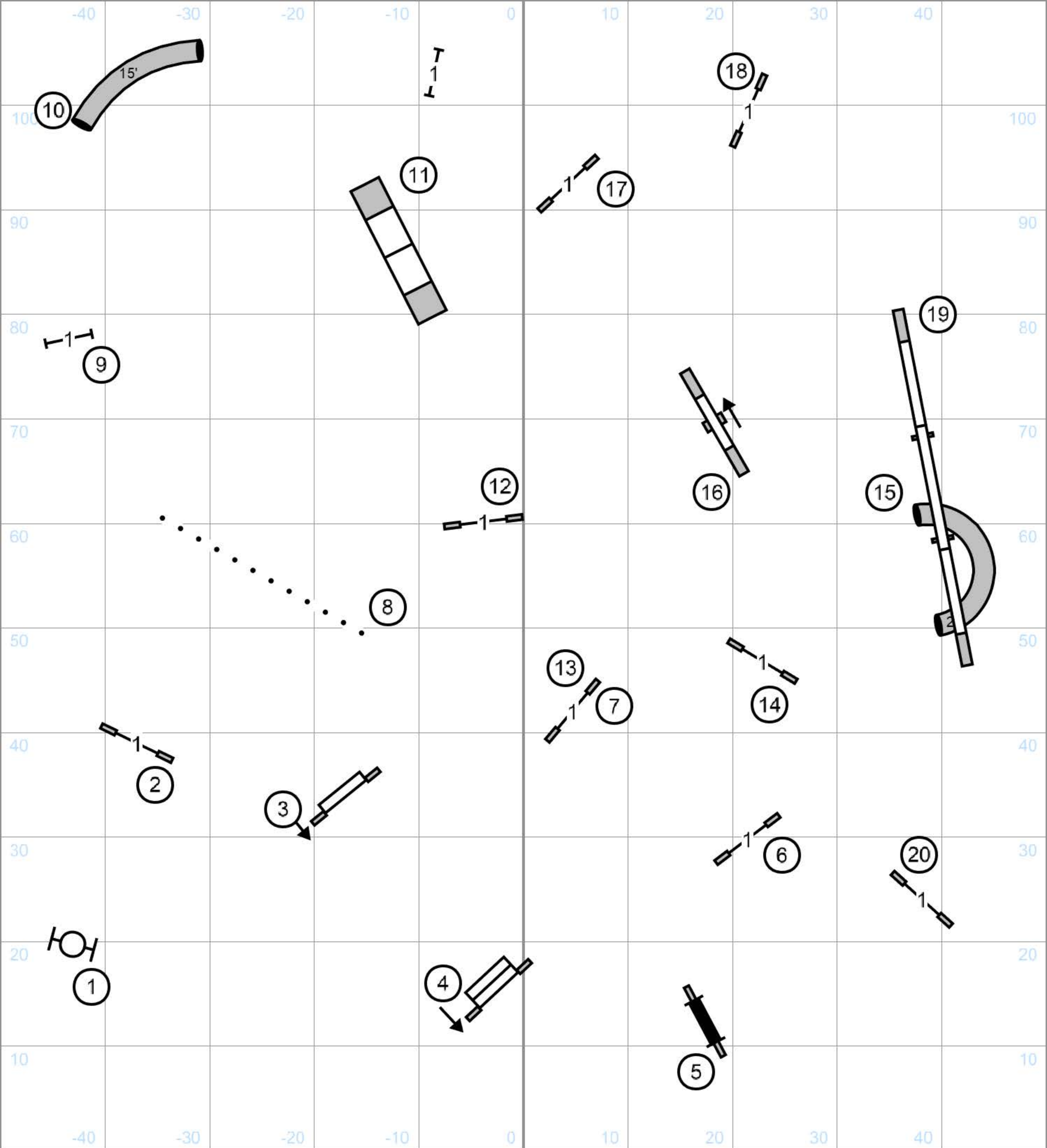


Agility Association of Central New Jersey

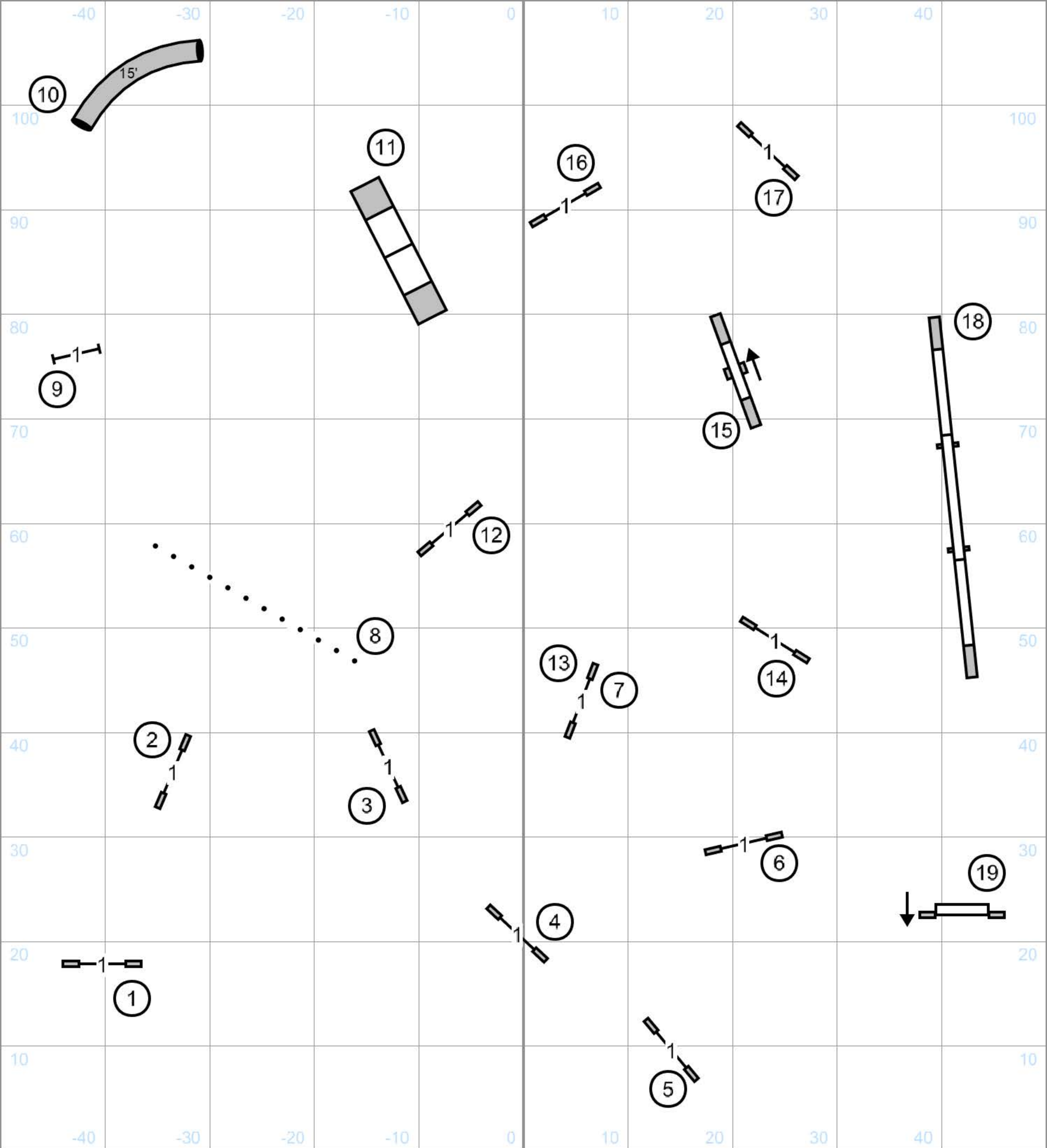
**Open Standard**

Saturday June 14, 2025

Judge: Han Yu



Agility Association of Central New Jersey  
**Excellent/Master Standard**  
 Saturday June 14, 2025  
 Judge: Han Yu



Agility Association of Central New Jersey  
**Premier Standard**  
 Saturday June 14, 2025  
 Judge: Han Yu